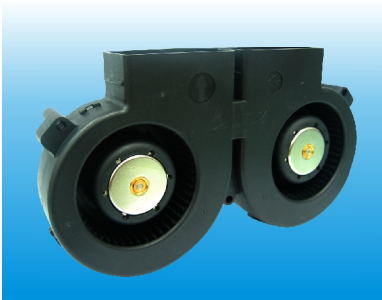


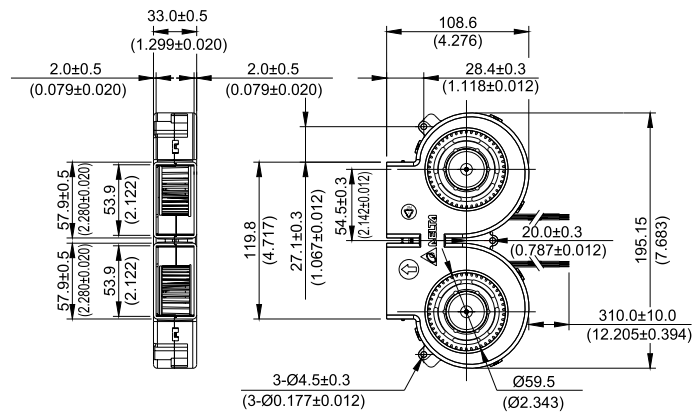
New



- * Bearing Type
Ball Bearings
- * Material
Impeller & Frame: Plastic (UL94V-0)
- * Lead Wires :
UL 1007 AWG#24 OR Equivalent
Red Wire Positive(+)
Black Wire Negative(-)
- * Weight : 385g (13.58 oz)

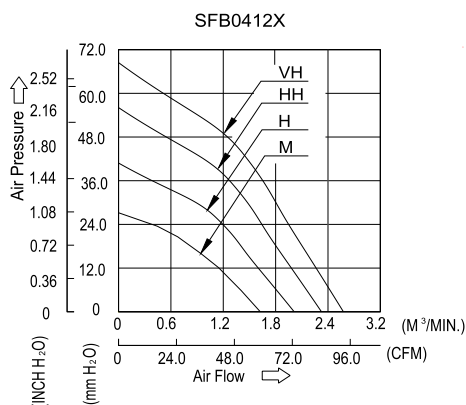
SFB 196 x 109 x 33 MM SERIES

■ DIMENSIONS DRAWING



UNIT: $\frac{\text{mm}}{(\text{INCH})}$

■ P & Q CURVE (AT RATED VOLTAGE)



| MODEL | | Rated Voltage | Operating Voltage Range | Rated Current | Rated Input Power | Speed | Maximum Air Flow | | Maximum Air Pressure | | Noise |
|------------------|-------------|---------------|-------------------------|---------------|-------------------|--------|------------------|-------|----------------------|--------|-------|
| PART NO. | FUNCTION | VDC | VDC | Amp | Watt | R.P.M. | m³ /min | CFM | mmH₂O | IN H₂O | dB-A |
| SFB0412M | -R00 / -F00 | 12 | 7.0 to 13.2 | 1.40 | 16.80 | 3300 | 1.610 | 56.85 | 27.06 | 0.893 | 57.5 |
| SFB0412H | -R00 / -F00 | 12 | 7.0 to 13.2 | 2.10 | 25.20 | 4000 | 2.012 | 71.07 | 40.85 | 1.608 | 61.5 |
| SFB0412HH | -R00 / -F00 | 12 | 7.0 to 13.2 | 3.10 | 37.20 | 4600 | 2.325 | 82.12 | 56.08 | 2.208 | 64.5 |
| SFB0412VH | -R00 / -F00 | 12 | 7.0 to 12.6 | 4.60 | 55.20 | 5300 | 2.577 | 90.99 | 68.43 | 2.694 | 67.0 |

- * Function type is optional.
- * The max. air flow and the speed are measured in free air ; max. air pressure is measured at zero air flow.
- * Noise is measured in anechoic chamber in free air, one meter from intake side.
- * All readings are typical values at rated voltage.
- * Specifications are subject to change without notice.